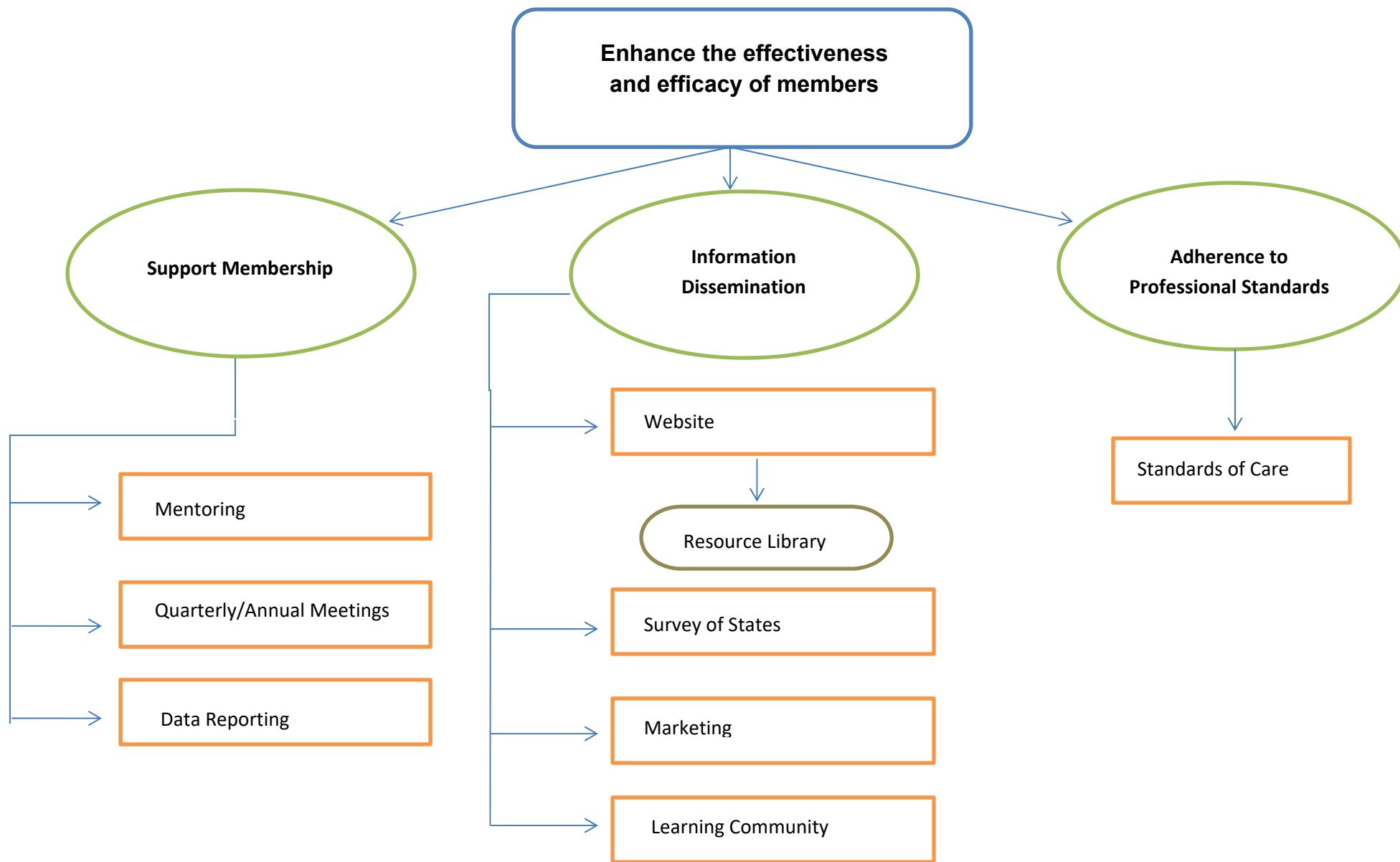


Association of Problem Gambling Service Administrators (APGSA) Strategic Map FY2019



Workgroups

Support Membership

Data Reporting: Eric Preuss (Lead), Quinetta Womack, Jeremy Wampler, Gajef O'Neil, Trevor Urman

Membership: Jeremy Wampler (lead), Liz Lanza

Mentoring: Mentoring within APGSA happens regularly on an informal basis. Members have indicated a willingness to help others by replying to questions posted on the *Member Forum* section of the APGSA website, by responding to requests via email or phone, or by meeting in person.

Quarterly/Annual Meetings: President and Vice President

Information Dissemination

Learning Community: Victor Ortiz (lead)

Marketing: Stacey Frohnapfel (Lead), Helen Ghebre, Terri Sue Canale-Dalman, Elise Mikelson, Robert Henson

Website/Resource Library: Nancy Murray (lead), Mary Drexler

Survey of the States: Nancy Murray & Roxanne Waldren (co-leads), Jennifer Berg (Exec Sponsor), Stacy Frohnapfel, Eric Preuss, Jeremy Wampler, Greta Coe

Adherence to Professional Standards

Standards of Care: Scott Anderson (Lead), Terri Sue Canale-Dalman, Eric Preuss, Quinetta Womack, Victor Ortiz, Nancy Murray, Carol Spiker, Jennifer Davis-Walton, Jeremy Wampler, Lori Rugle (guest)